

CONTENTS

- Listen & Teach
- Laser alignment with Leonova
- New modules to Condmaster® Pro 5
- Did you know...
- Condition monitoring at AMEY
- SPM Academy



SPM Update

– a newsletter about the world of SPM

Welcome to the newsletter SPM Update. We hope it will offer interesting reading to you as a SPM user.

Listen & Teach

- Customer survey, 2004

SPM Instrument AB, Sweden, has made a customer survey during 2004. The survey was called "Listen & Teach" and targets the Swedish market. This was the second time for this survey and the purpose is to become an even better partner by listening to our customers. The answers will help us to improve ourselves as a condition monitoring supplier.

Gratifying results

The survey shows that our customers are very pleased with our sales and service personnel. It applies to both their performance as well as their ability to provide an optimal solution for the customer. It is very important to us that our customers have faith in our staff and that we can offer good availability.

Improvements

Our customer would like to hear more from and about us. They ask for more information about SPM, our methods and the products we provide. We can also improve within vibration analysis. Primarily share the knowledge we possess regarding vibration after more than 10 years of vibration analysis. It's important for us to show that SPM do not only know our own Shock Pulse Method®, but also that we have well developed methods such as vibration analysis etc. Read more about EVAM® at our website. EVAM stands for "Evaluated Vibration Analysis Method" and it provides a complete and instant evaluation of your vibration data.

86% would choose SPM again

A very satisfying result of this survey is that 6 out of 7 SPM users would choose SPM as their next supplier for condition monitoring systems.

NEWS!

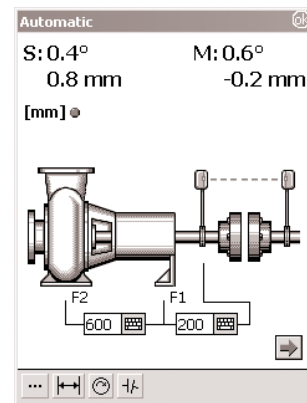
MG4 units for vibration and shock pulse monitoring are now available for data transmission via an RS-485 network. The protocol is Modbus RTU (Remote Terminal Unit).

Contact your nearest SPM company or distributor for more information.



Laser alignment with Leonova™

SPM Instrument, Sweden, adds another machine maintenance function to its multi-purpose condition monitor Leonova™. Called LineLazer, this sturdy shaft alignment kit and its software presents some crafty technical innovations to increase accuracy and ease of use.



Using precision inclinometers, the angle of rotation of both sensors is known at all times. This allows alignment in fully automatic mode or measurement of the shaft position with just three clicks on the Measure key, turning the shaft a third of a revolution or less.

LineLazer
by spm

Like all advanced Leonova™ functions, LineLazer can be bought on a 'pay on use' basis. The purchase price is significantly reduced and pre-paid credits are automatically deducted each time the function is used, thus converting investment money into operating costs.

Easy aiming

The laser beam is spread horizontally and directed towards a 35 mm [1.4 inch] vertical detector. This makes the effective target size larger compared with other high performance measuring units using pencil beams and 18 mm [0.7 inch] square detectors. LineLazer measuring units need no adjustment screws and stay on target even when misalignment is severe. The laser beam is modulated and thus easily and automatically distinguished from interfering light sources.

Easier measurement

The laser beam is not mirrored, both measuring units are true transmitters/detectors. Wireless communication (patent pending) between the measuring units makes the communication cable between the heads redundant.

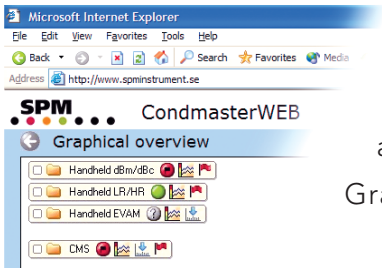
LineLazer software is configured for horizontal and vertical shaft alignment. It measures soft foot and uses thermal compensation. The display is updated in real-time and the graphical interface guides the user through the alignment process to the easily understood results.

Did you know...

Electric motors in the M3000 series, manufactured by ABB, are prepared with Shock Pulse Adapters. If you see this leaflet when installing your new ABB motor, you are already set to start measuring with SPM's shock pulse method.



New modules for Condmaster® Pro 5



CondmasterWEB is an optional module, allowing the user to reach his Condmaster program as a 'read only' version from any PC running Microsoft Explorer. Condmaster will open in the Graphical Overview.

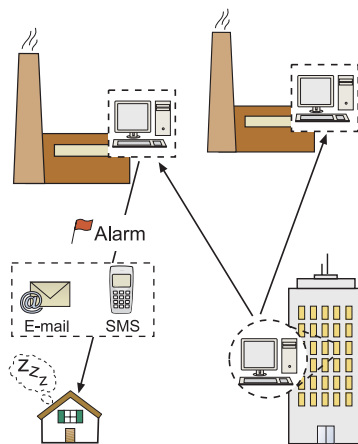
By clicking on folders and icons, the user can quickly and easily reach any measuring result display and manipulate it in real time in the same way as in the corresponding window of his 'real' CondmasterPro®. Measuring point set-ups can be seen but not edited.

CondmasterWEB is installed as a service on the server computer and can be accessed from the client browser via LAN or Internet through port 5790. The server computer requires Windows NT or higher and the client requires Microsoft Explorer 6.0 or higher.

Alarm via e-mail and cellphone

This module sends selected alarms on selected components/measuring points via e-mail to stated addresses, according to a user defined weekly schedule.

The e-mails can be rerouted to cellphones with SMS capability via messaging services.



As a general set-up, the company's mail server name is input under 'Setting'. Each alarm mail assignment has a name and recipients (e-mail addresses). Measuring points and alarm types are selected from lists.

In a week calendar, the user marks from – to periods. Alarms occurring during the marked periods will be sent by e-mail to all stated addresses.

It's also possible to mark vacation periods on a year calendar, during which the mail service is suspended.

Alarm via cellphone requires the services of a company that redirects e-mail to cellphones. The user must make his own arrangement with the service company. An example on such a provider is Tellus-Talk. www.tellustalk.com

SPM Academy

SPM offers some of the world's most efficient and simplest methods of condition monitoring on rotating machines. The SPM Academy provides the training that serves as an integrated part of the company's approach to condition monitoring.

The SPM Academy trains executives, supervisors, production personnel and maintenance personnel who are involved in different ways in mechanical condition monitoring. The objective is to enable you to obtain the information that is critical to your production in plenty of time, so that you can avoid expensive production stoppages. The SPM Academy offers standardized courses as well as customized training.



Condition monitoring at AMEY

AMEY is one of UK's leading providers of outsourced facilities management and site management services. Services include staff and resource support – cleaning, travel, catering services and client enterprise support– conferencing, reception, help desks, office management and also maintenance.

AMEY is managing a contract for the facilities management and maintenance for all buildings owned by Centrica. Centrica is an energy and home services provider. Applications such as water pumps, cooling systems and ventilation fans are monitored using SPM Equipment.

AMEY and Centrica has realized that their maintenance can be much more time- and cost efficient using Condition Based Maintenance (CBM).

One of the major savings opportunities is in the area of general day-to-day maintenance, where staff can be utilised much more efficiently. There are also very big gains to be made from savings related to failure and repair.

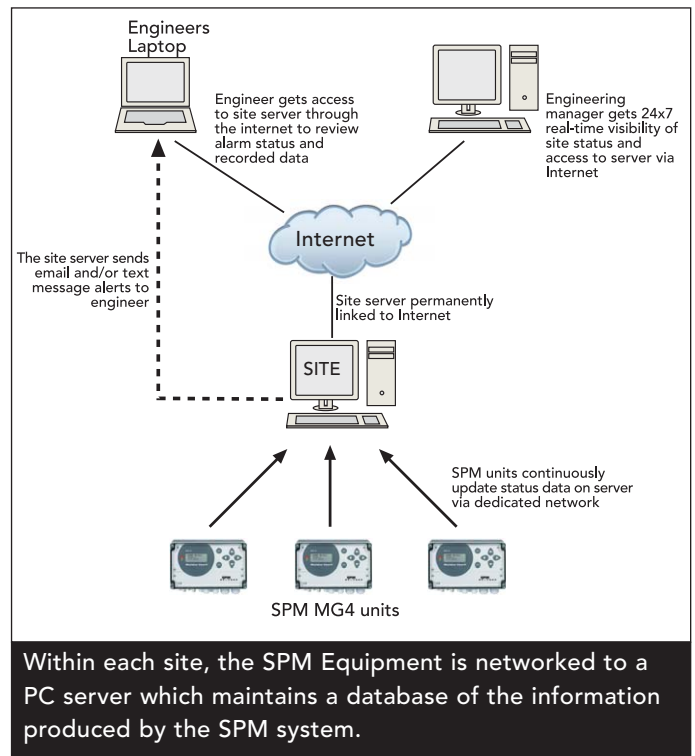
The estimated savings and costs for the first five sites are as follows:

Savings:

Annual Maintenance Charges	\$ 247 000
Annual failure and repair costs	\$ 279 000
Total annual savings	\$ 526 000
Investment	\$ -716 000
Pay back period	1.39 years

Source: Intelligent Maintenance, Business Case
Written by: Nigel McElvenny

Networking allows the CBM system to broadcast alarms directly to the appropriate engineer, thereby reducing or eliminating the need for maintenance staff to be resident on-site, whilst remote monitoring allows engineering management to stay completely up-to-date with the status of plant across the estate.



Installed on the server is a software programme which manages the database and the communication with the SPM equipment. It also acts as a realtime alarm messaging system, dispatching text and/or e-mail requests for corrective action to the engineering staff according to predefined rules.